

Telework - Use Dual Monitor in Remote Desktop Protocol (RDP) inside a Citrix Virtual Desktop

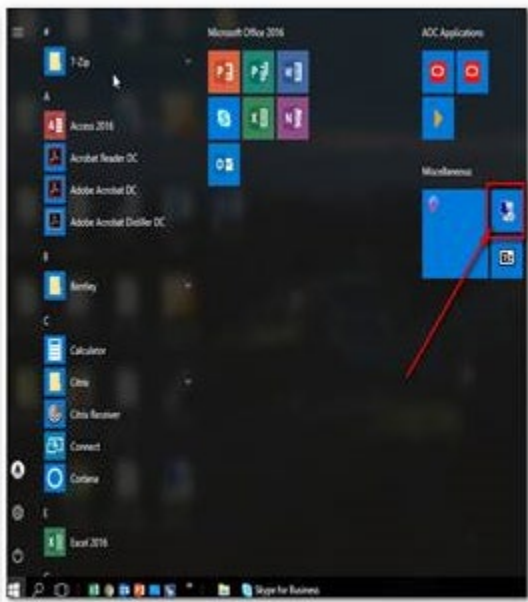
- Ratings:
- Views:
- Modified:
- Status:

-
- 48
- 3/12/2020
- Published

Table of Contents

• Analyst Content

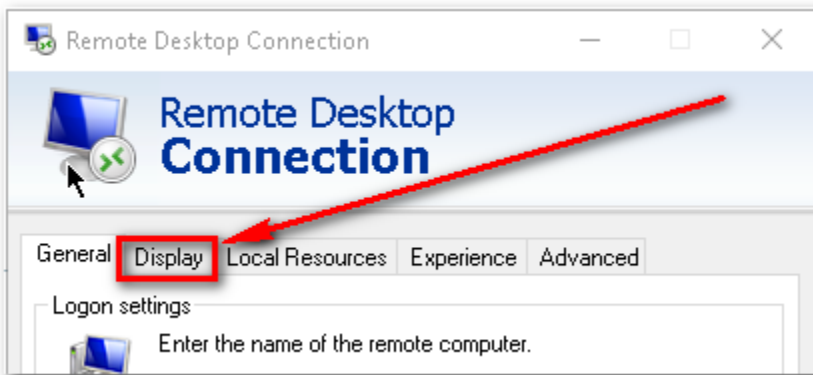
1. Follow the SOP in the Knowledge Base label as **"Telework - Using Multiple Monitors"**
2. Make sure you know **your workstation Name or the desktop where you need to RDP**
3. From the start menu choose **RDP**



4. Enter your **PC/Desktop name and user name**

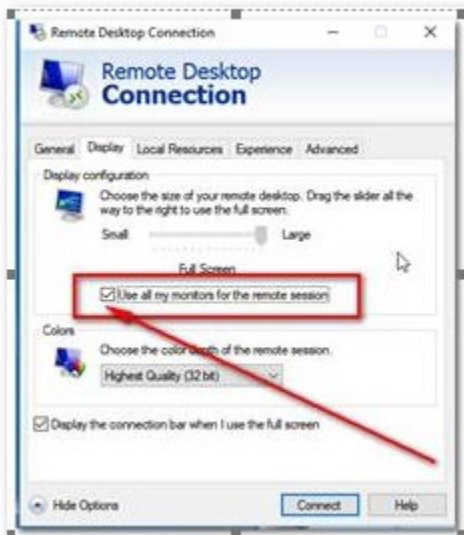


5. BEFORE You choose Connect , click on the **DISPLAY** tab



remote session"

6. Choose "Use all my monitors for the



7. Choose **Connect**

NOTE – if your PC/Desktop is in sleep mode , please use the "Log On to My PC" option



Once your PC is out the sleeping mode, cancel the RDP and follow step 3 to 7

ANALYST CONTENT

AOC user's generally use remote desktop services to access to their work desktop to use third party software that is not installed in the Virtual Citrix Desktop